

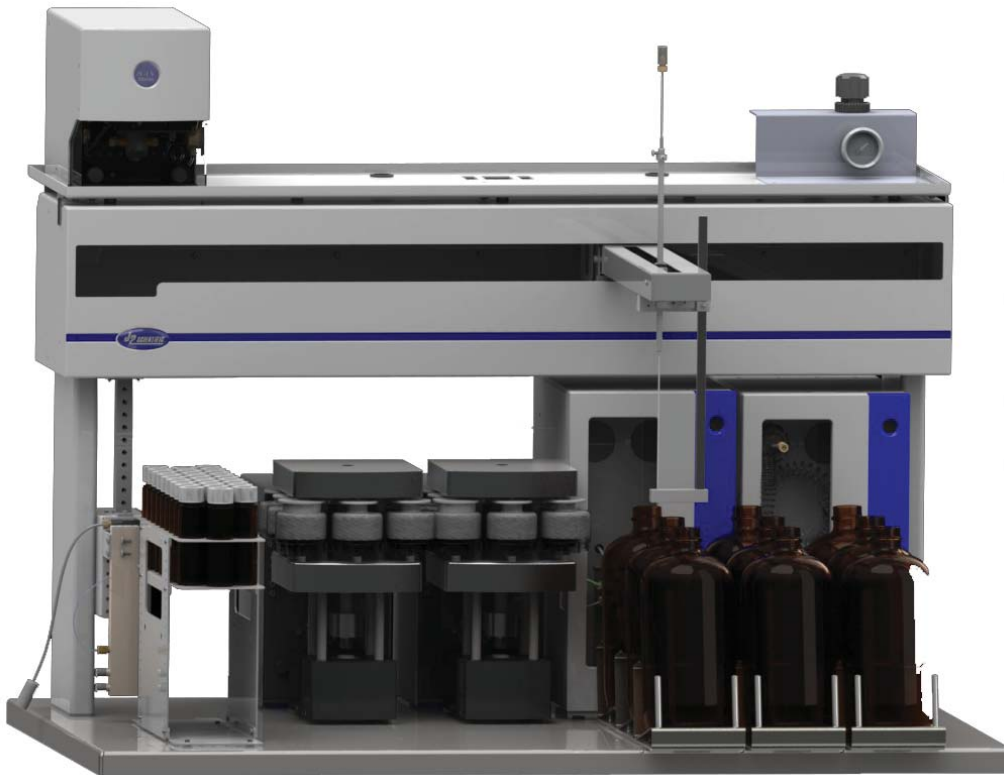
PREPLINC

LVi SPE Water Extraction System

The PrepLinc™ LVi SPE Water

Extraction System performs SPE extractions on large volume water samples with elegance and ease. Specialized SPE column modules accommodate water extraction discs, as well as, standard SPE columns.

The precision of the LVi pump module gives the necessary control of sample introduction to the extraction media. Powerful and “smart” software let you choose priorities for flow vs. pressure. The system can adjust flow to keep pressure within limits, but also respond to minimum flow and pressure settings you determine. Automatic Next Sample programming means you will never arrive in the morning to find the system shut down on sample number one. The newest and most trouble-free system for large-volume water extraction automation.



- SPE for large volume Environmental, Water, Food, Pharma and Forensics samples
- EPA Method 3535 Solid Phase Extraction
- EPA 500 & 600 Series Water Methods
- Integrates with other PrepLinc modules for Inline Concentration and the addition of a secondary SPE column for drying or cleanup.

Flow Control

Pump module gives consistent sample flow rates up to 90 mL/min.

Pressure & Flow

Choose Flow Rate
Priority for flow-critical methods.
Choosing Pressure
Priority adjusts flow as pressure changes.

Probe Depth

Select probe depths for sample pickup to avoid sediment. And select probe depth for bottle rinse to maximize recoveries.

Cartridges

Compatible with a wide variety of water extraction cartridges and discs.

Tray Options

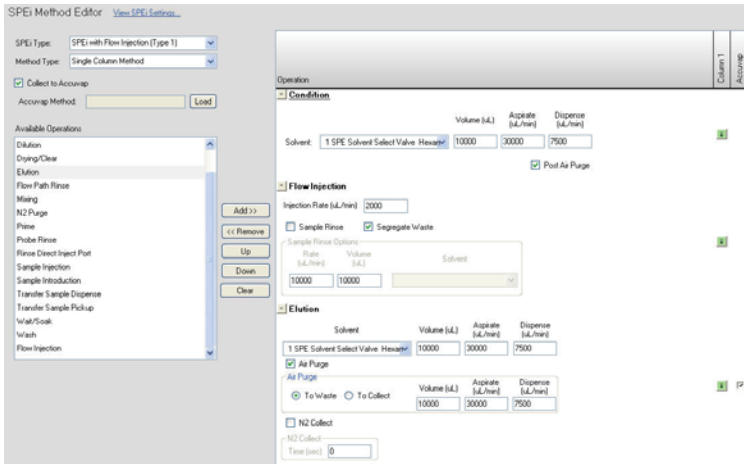
Capacity up to 24 1L samples or 12 2L samples. Increased capacity (up to 40) for smaller sample volumes. Collect into a variety of vials.

J2 SCIENTIFIC

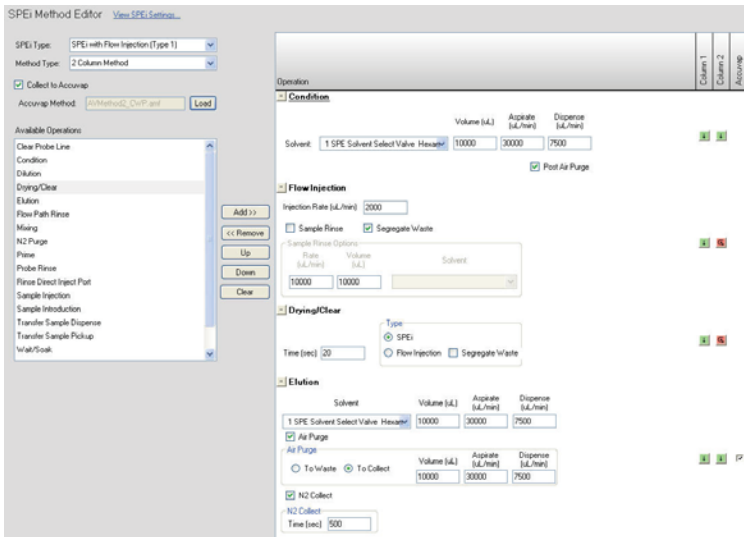
J2 Scientific GmbH, Reifenstuelstr. 3, D-80469 München
Tel.: +49 (0)89 72069587, info@j2scientific.eu

LVI SPE Method Editor

Create simple, single-column or complex, multi-column methods through the same intuitive method editor.



The method screen shown at left is an example of a typical water extraction SPE method. There is one condition step, the sample is introduced to the column and then the sample is eluted.



This LVI method example uses two columns inline and the AccuVap™ for concentration. Both columns (water extraction disc and Na₂SO₄ column, for example) are conditioned. The LVI pump module is used to introduce the sample onto the first column only. There is a bottle rinse performed and the water waste is segregated.

A drying time is programmed to remove all water from column one. The analyte elution is then performed through both columns and the is sent to the AccuVap™ for concentration.



This example uses an LVI Column Module paired with a standard column module for the post-extraction step.

AccuVap™ Configuration Options

Add an AccuVap™ for the ability to perform final concentrations after cleanup or concentrate fractions between cleanup steps.

AccuVap™ Inline

- SPE with Evaporation

AccuVap™ FLX

- SPE with Evaporation
- Evaporation Only

